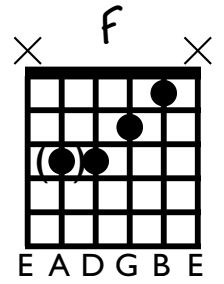
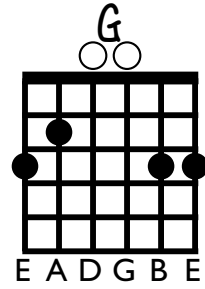
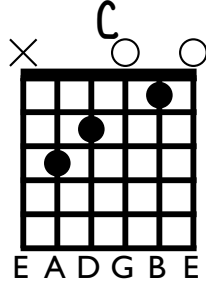
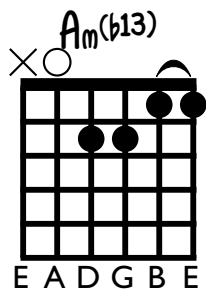
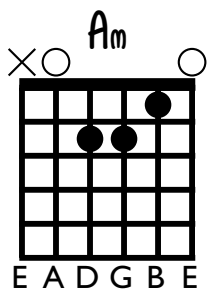


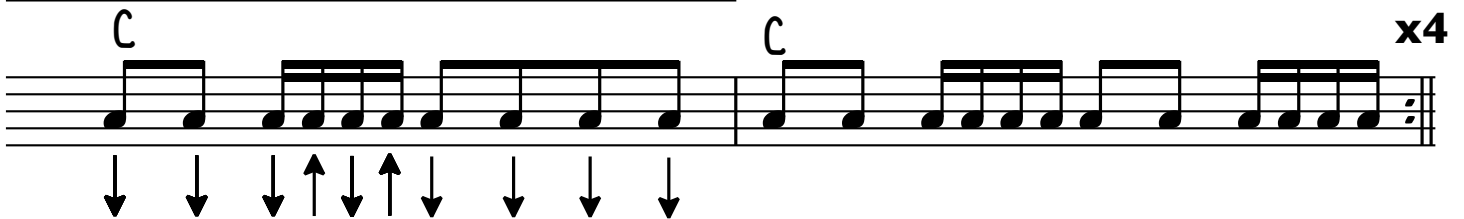
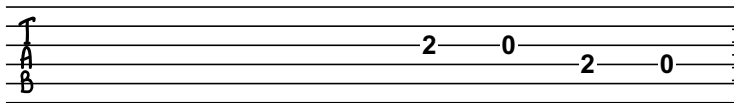
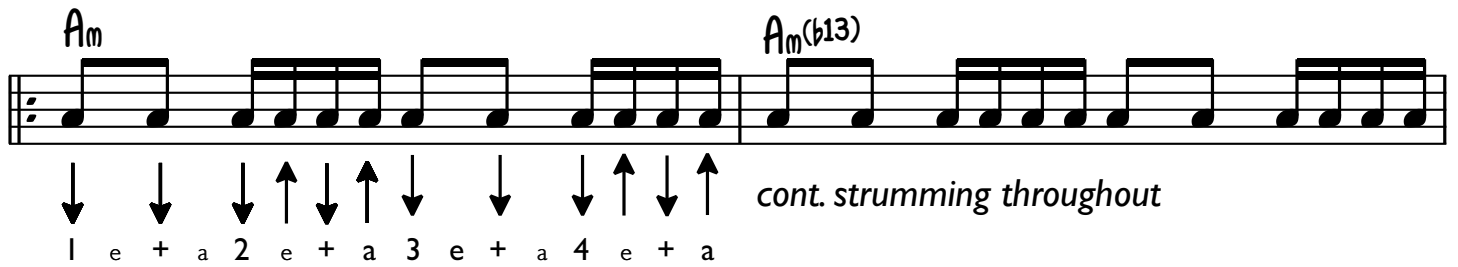
Capo 5

# LITTLE LION MAN

Mumford & Sons



## INTRO



## VERSE





— — — — —

The musical notation for the 'e + a' exercise is shown on a single staff. It consists of a sequence of notes: a half note 'e' (first finger), a quarter note '+' (first finger), a quarter note 'a' (second finger), a half note '2' (second finger), a quarter note 'e' (second finger), a quarter note '+' (second finger), a quarter note 'a' (third finger), a half note '3' (third finger), a quarter note 'e' (third finger), a quarter note '+' (third finger), a quarter note 'a' (fourth finger), a half note '4' (fourth finger), a quarter note 'e' (fourth finger), a quarter note '+' (fourth finger), and a quarter note 'a' (fourth finger). The notes are grouped into pairs of eighth notes: (e, +), (a, 2), (e, +), (a, 3), (e, +), (a, 4), (e, +), and (a, 4). The exercise is marked with a '4' in the top left corner, indicating a 4/4 time signature. The notes are written on a single staff with a treble clef and a key signature of one sharp (F#).